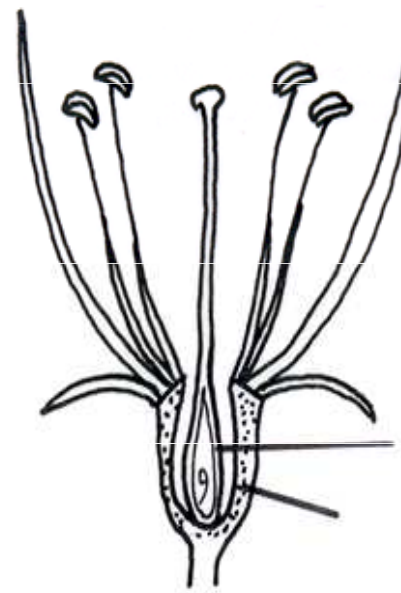
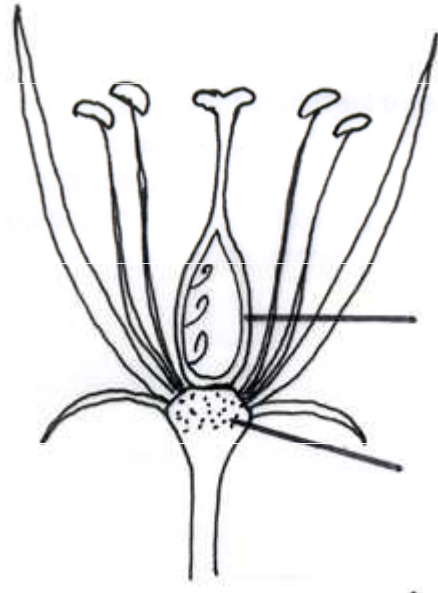
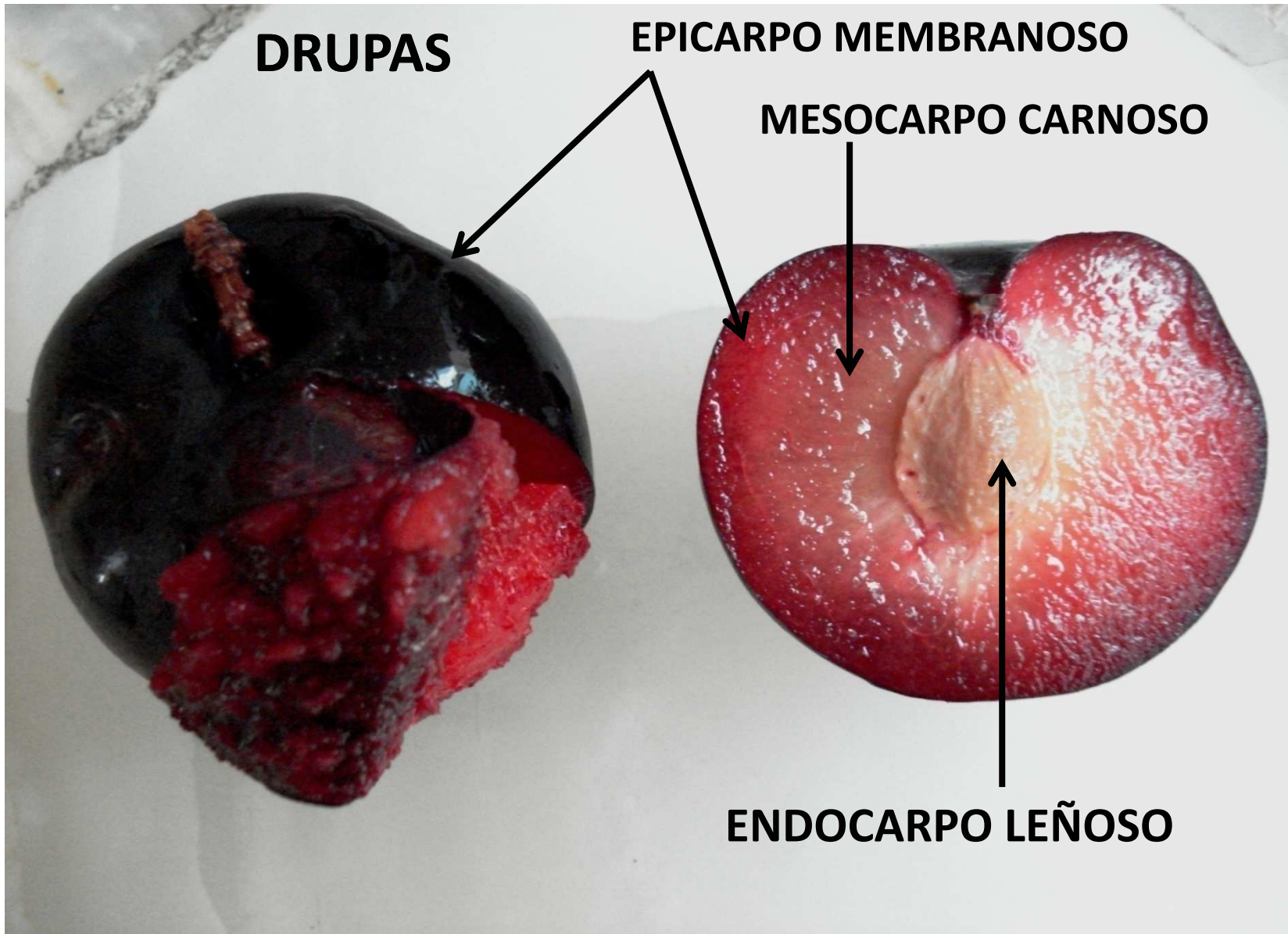


FRUTOS MONOTALÁMICOS SIMPLES

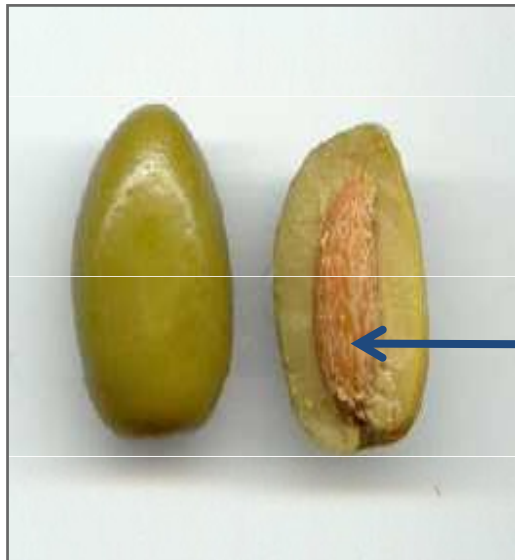
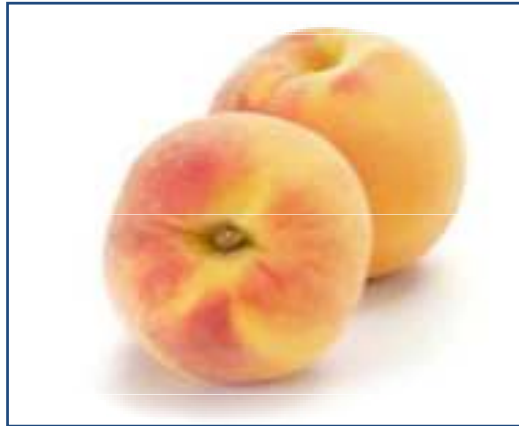
CARNOSOS E INDEHISCENTES

DE GINECEO SÚPERO O MEDIO





# DRUPAS



← **ENDOCARPO LEÑOSO**



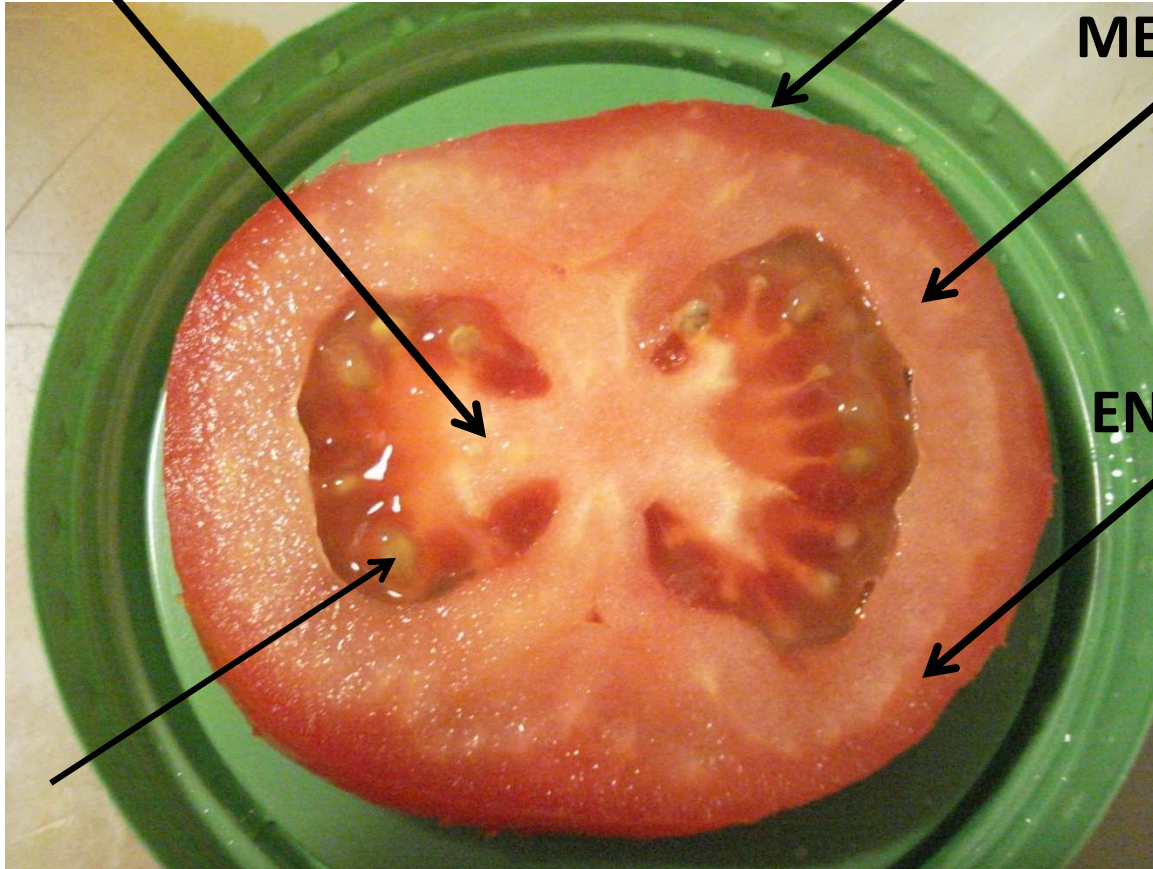
# BAYA

PLACENTA

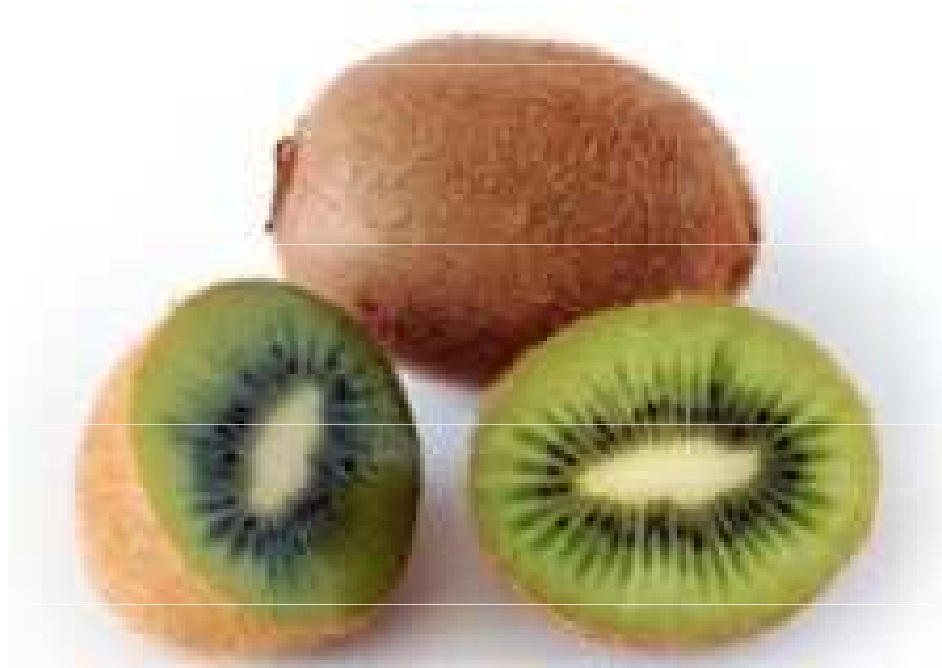
EPICARPO MEMBRANOSO

MESOCARPO CARNOSO

ENDOCARPO CARNOSO



# BAYA

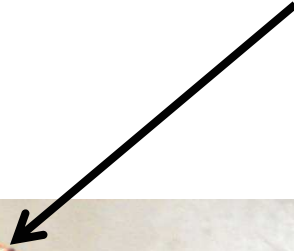


kiwi *Actinidia chinensis* Planch  
Actinidiaceae



## HESPERIDIO

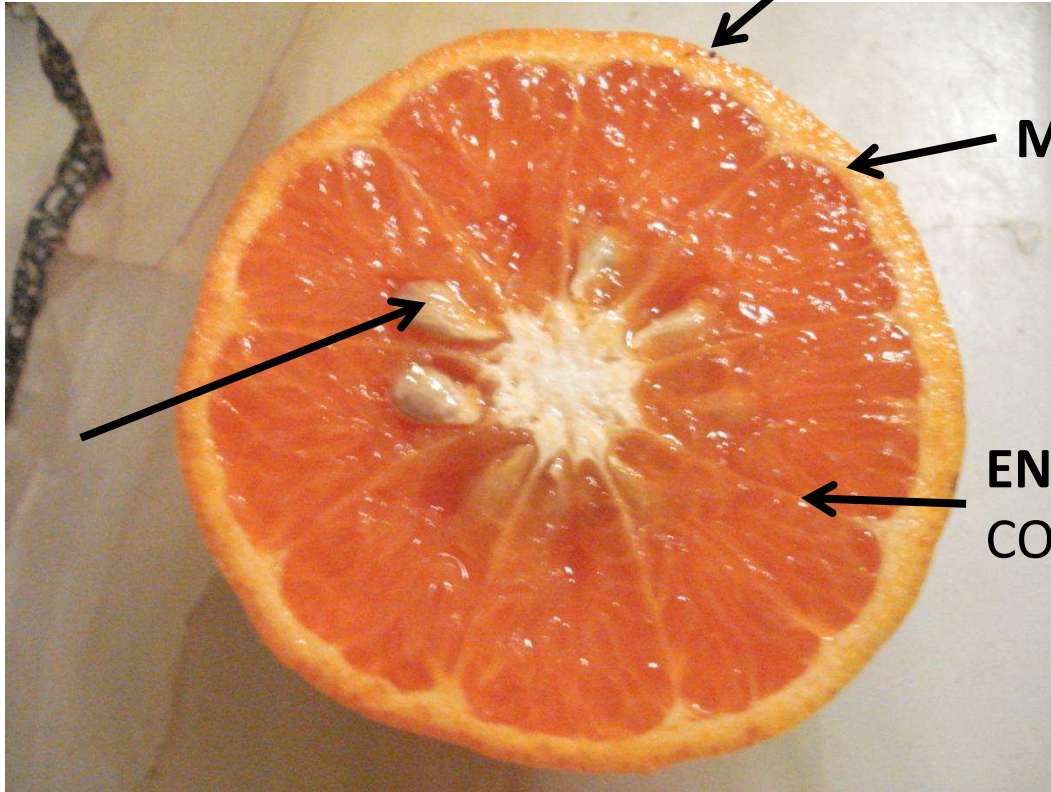
**EPICARPO GLANDULOSO**



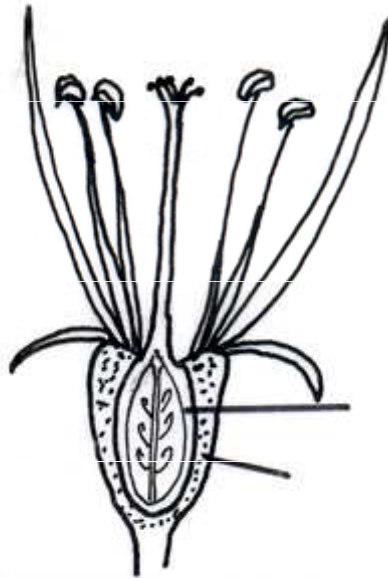
**MESOCARPO CORCHOSO**



**ENDOCARPO MEMBRANOSO  
CON PELOS JUGOSOS**



FRUTOS MONOTALÁMICOS SIMPLES  
CARNOSOS E INDEHISCENTES  
DE GINECEO ÍNFERO



# POMO



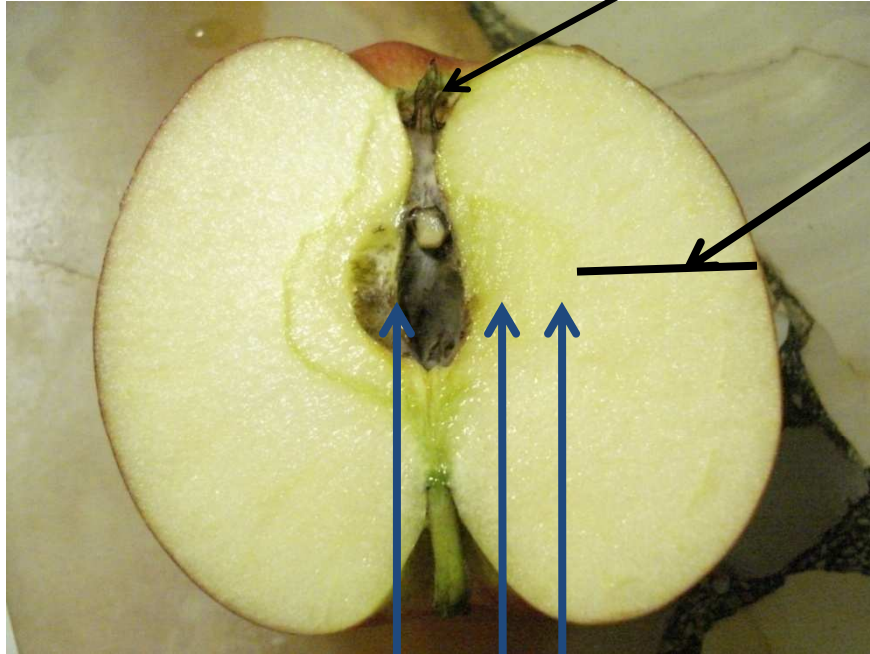
G





# POMO

INDUVIAS



RECEPTÁCULO

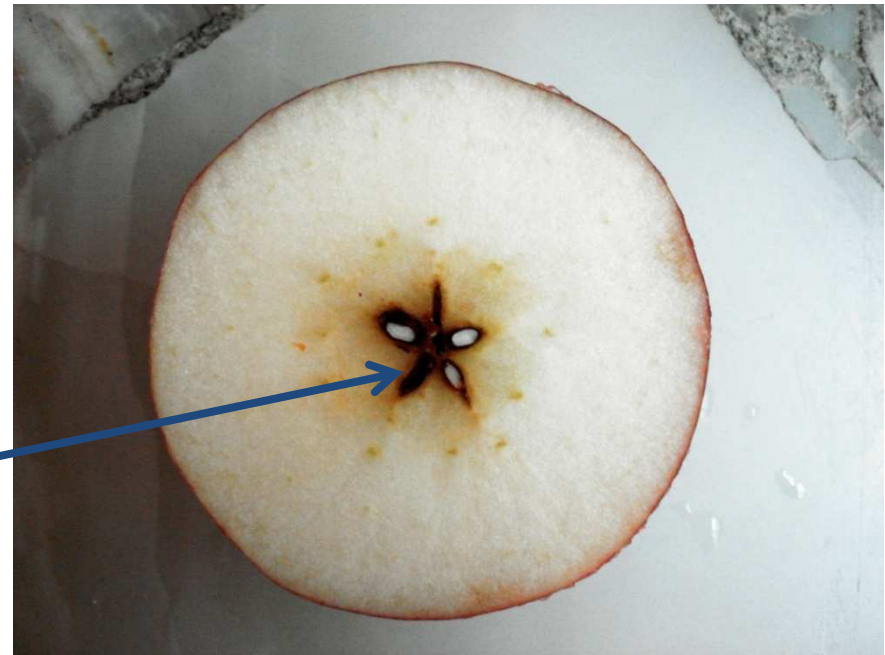
+

PERICARPO

EPICARPO

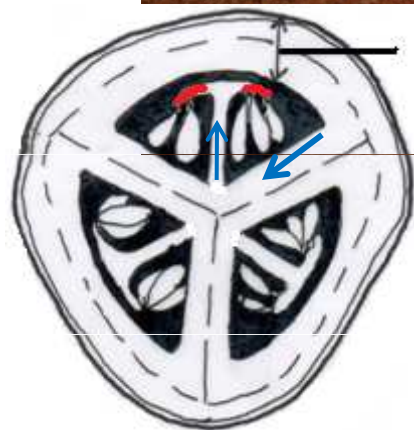
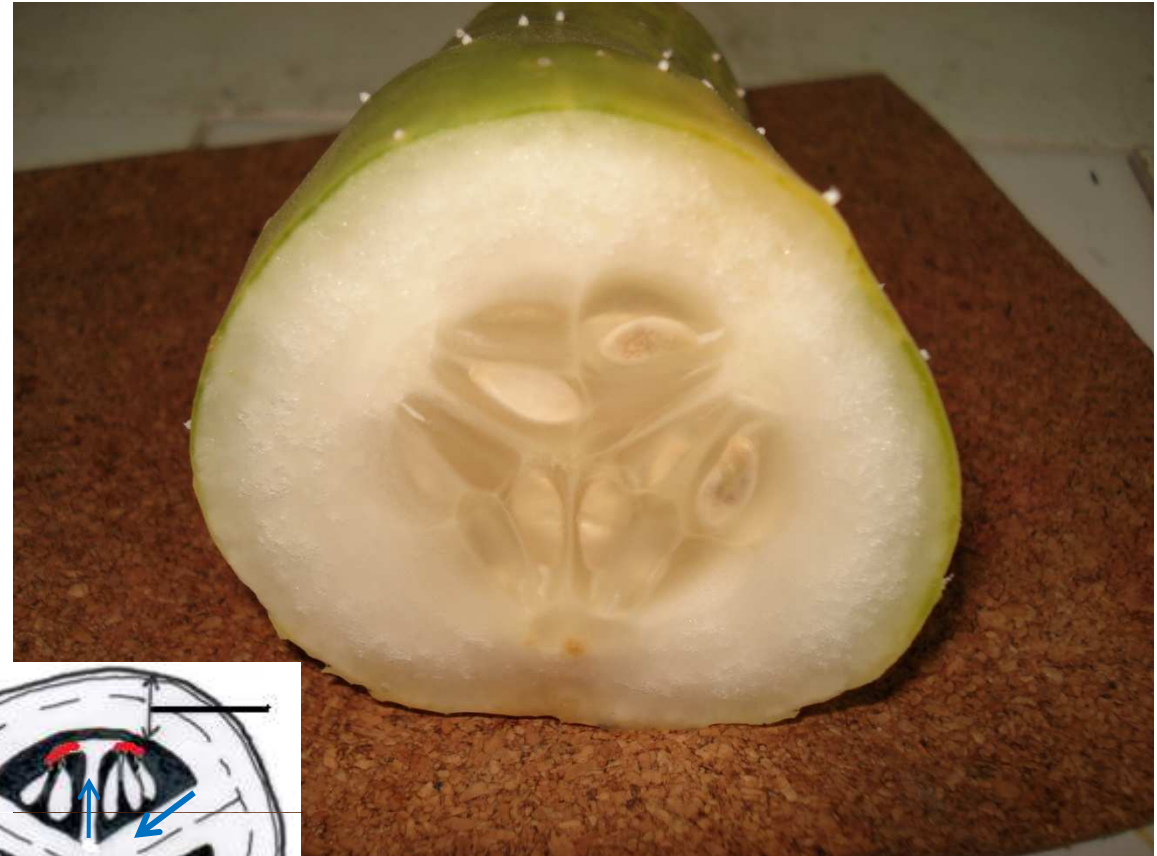
MESOCARPO

ENDOCARPO





# PEPÓNIDE

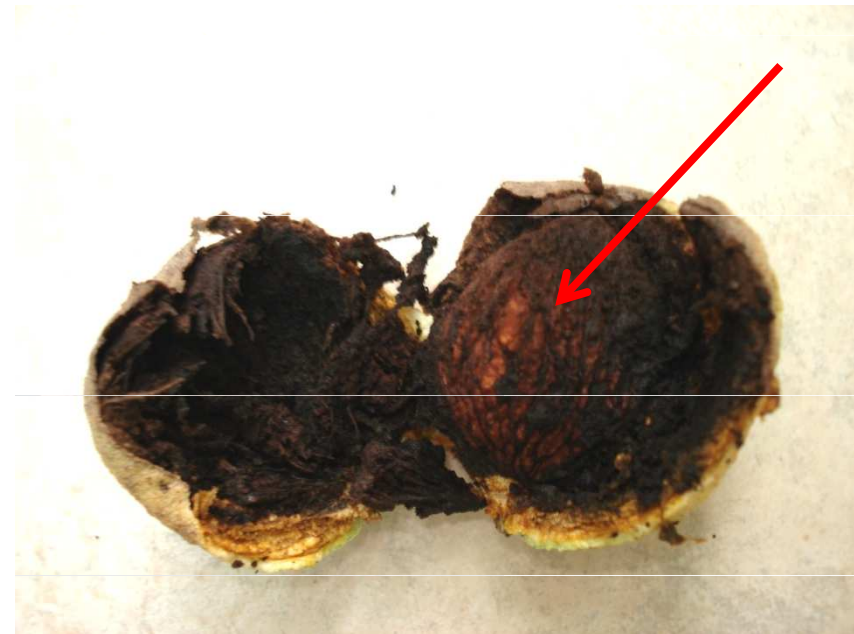


fam. Cucurbitaceae

**BAYA DE GINECEO ÍNFERO o pseudobaya**



**DRUPA INVOLUCRADA o Pseudodrupa (tryma)**

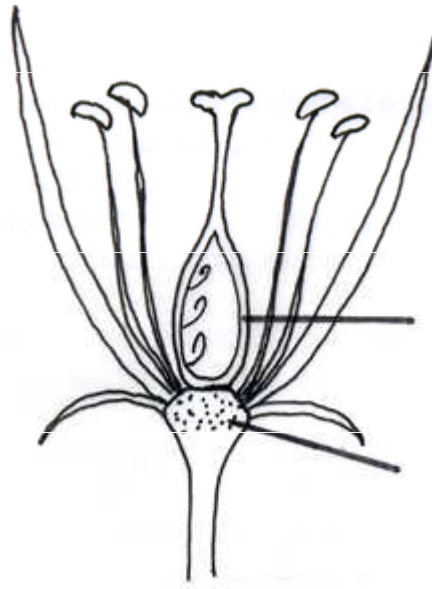


## BALAUSTA, POMEGRANATE

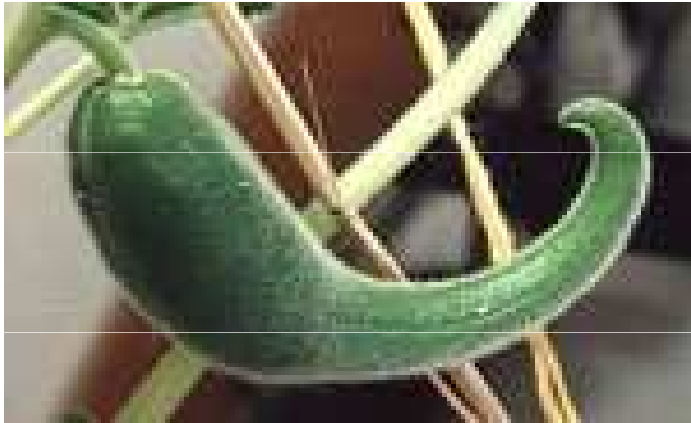


*Punica granatum* L.  
Lythraceae 'granada'

FRUTOS MONOTALÁMICOS SIMPLES  
CARNOSOS Y DEHISCENTES  
DE GINECEO SÚPERO



## CÁPSULA DRUPACEA DE GINECEO SÚPERO Y DEHISCENCIA SEPTICIDA (ceratio)



*Ibicella lutea* (Lindl.) van Eselt.  
"cuernos del diablo"

Fam. Martyniaceae

